



**VINALIFT**  
Lifting your dream

**VIETNAM STEEL STRUCTURES AND LIFTING EQUIPMENT JSC**

**Head Office - Ha Noi City:**

**Address:** 161 Ngoc Hoi street, Phap Van – Tu Hiep Urban Area, Hoang Mai District, Ha Noi, Viet Nam

**Contact number:** + 84 24 3 641 9469 (Ext: 102)

**Fax:** + 84 243 641 9470 - **Website:** www.vinalift.vn

**HAI DUONG Factory (Registered address)**

**Address:** Plot A1, Phuc Dien Industrial Zone, Cam Dien Ward, Cam Giang District, Hai Duong Province, Viet Nam

**Phone :** + 84 2203 545 002 - **Fax:** + 84 2203 545 001

**VINALIFT**  
Lifting your dream

**COMPANY**  
**PROFILE**



[www.vinalift.vn](http://www.vinalift.vn)



## CONTENT

<b>02</b>	CONTENT
<b>03</b>	FOREWORD
<b>04</b>	MILESTONE
<b>06</b>	CORE VALUES, VISION AND MISSION
<b>08</b>	TECHNOLOGY CAPACITY
<b>10</b>	SERVICES
<b>13</b>	PRODUCTS
<b>17</b>	PORT HANDLING CRANE
<b>21</b>	CIVIL CONSTRUCTION GANTRY CRANE
<b>27</b>	CRANES FOR HYDROLIC POWER PLANT AND THERMAL POWER PLANT
<b>32</b>	CRANE FOR SHIPYARD
<b>36</b>	CRANE FOR STEEL MILL
<b>41</b>	ACCESSORIES FOR THE SHIP-ENGINE -BUILDER
<b>42</b>	WORLD MAP
<b>44</b>	CERTIFICATION
<b>45</b>	PARTNERS & CUSTOMERS

## FOREWORD

Vietnam Steel Structures and Lifting Equipments Joint Stock Company (VINALIFT) would like to express our gratitude to the customers whom we have a luck to get in touch through this catalogue.

Being on the way of development since 2006, VINALIFT has being well known as the domestic leading lifting equipment supplier; and our name tag has been appeared to some locations onto the world's map.

VINALIFT always brings the Customer's Trust and the Confidence as our top priorities and the driving force. We provide the supplying package (turnkey package): consulting the solution, preparing the design adapting to the customer's requirements, delivering the equipment to the site and commencing the load test in order to make sure the equipment is ready to use once completing.

We understand that the human resources is a key which leads us to the acquired achievement as well as the future development; almost 200 engineers and workers are working tirelessly and dedicatedly to contribute to the company's strategy achieved.

Last but not least, it is you, our valued customer who are continuously supporting and believing in us shall be together with us to make a better organization and spread the Vietnamese business spirit to all over the world.





**MILESTONE - VINALIFT**

VINALIFT became the exclusive distributor for the leading hoists suppliers of the European GHSA Hoist (Spain) **2015**

VINALIFT supplied successfully Gantry Crane 150/150 Ton **2014**

VINALIFT became the exclusive distributor for the leading hoists suppliers of the Asia Sungdo Hoist (South Korea) **2013**

Awarded contract with EPC contractor: Hyundai E&C, Daewoo E&C, Hyundai Heavy Industrial and Munck Cranes, which marked us on the global market. **2011 – 2015**

VINALIFT acquired the ISO 9001-2008 by DQS Holding GmbH **2010**

Supply successfully the gantry crane 100/100 Ton – Song Thu Shipyard **2008**

The factory completed / Area square: 20.000m<sup>2</sup> **2007**

Vietnam Steel Structures and Lifting Equipments Joint Stock Company established. **2006**

Auto operation crane for wte **2022**

VINALIFT widened its market to Canada **2021**

VINALIFT widened its market to America **2019**

VINALIFT acquired the ISO 9001-2015 **2018**

VINALIFT run the offices internationally Japanese Branch and Korean Branch. **2017**

VINALIFT supplied successfully Portal Crane 30T x 25 M to project of X52 Shipyard and run the Branch Office in HO CHI MINH City. **2016**

**MILESTONE - VINALIFT**







VISION

VINALIFT becomes an international manufacturer of non-standard upgrading equipment, creating a Vietnamese brand, demonstrating Vietnamese wisdom and pride.



MISSION

VINALIFT committes to providing international quality non-standard lifting equipment, upholding the spirit of cooperation and development, becoming a "reliable companion" of partners.



CORE VALUES

VINALIFT committes to protect the faithfulness of customers, suppliers and employees.



**TECHNOLOGY CAPACITY**

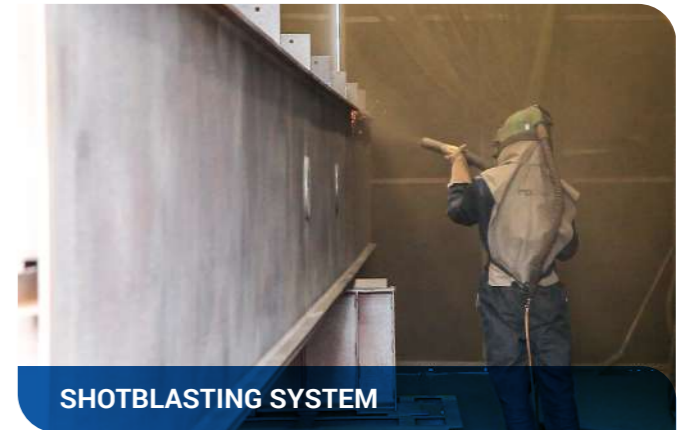
VINALIFT owns the factory, area = 20,000 m<sup>2</sup> at Phuc Dien Industrial zone, Hai Duong province, with sufficient machines for the complete production line: CNC Plasma Cutting machine, welding machine, air compressor, boring machine, drilling machines, lathe machine, shotblasting system, saw machine, lifting equipment: overhead crane, semi gantry crane, gantry cranes with capacity from 5T to 30T in the production line...



**WELDING MACHINE LINCOLN**



**MILLING MACHINE WOTAN RAPID 4**



**SHOTBLASTING SYSTEM**



**CUTTING MACHINE CNC GS 3000**



**01 CONSULTING DESIGN THE SYSTEM OF EQUIPMENT**



WE CUSTOMIZE THE DESIGN TO THE CUSTOMER'S NEED ACCORDING TO THE INTERNATIONAL AND NATIONAL STANDARDS:

FEM 1.001  
CMAA No.70  
AWS D1.1-2015  
ISO 8501-1

SSPC-SP10  
TCVN 4244:2005  
EN 1090

**02 FABRICATE THE STEEL STRUCTURES, TYPES OF LIFTING EQUIPMENT**



FABRICATE STEEL STRUCTURES AND LIFTING EQUIPMENT:

The quality control system 9001:2015 is apply in our working procedures.

The production line is equipped with machines and faculties for stable quality assurance.

**03 DESIGN SOFTWARE**



AUTO-CAD



INVENTOR



SAP2000



ANSYS



SKETCHUP

**04 TRANSPORTATION AND ERECTION**



FABRICATE STEEL STRUCTURES AND LIFTING EQUIPMENT:

The quality control system 9001:2015 is apply in our working procedures.

The production line is equipped with machines and faculties for stable quality assurance.

**05 MAINTAIN THE EQUIPMENT**



MAINTENANCE THE EQUIPMENT

Taking the advantage of a professional crane manufacturer, we offer the maintain package to the customer which their equipment is taken care during operation.



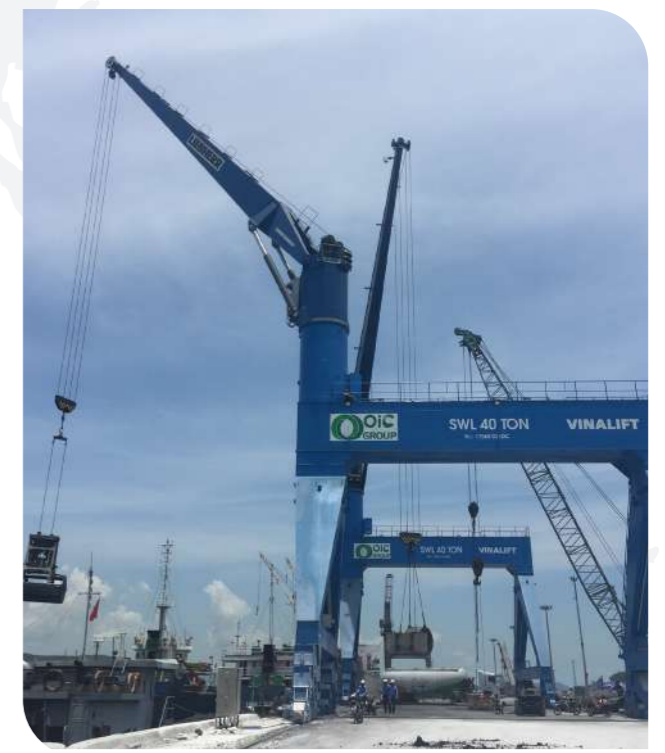
**06** COMMENCE THE LOAD TEST AND PROVIDE THE LICENSE FOR THE LIFTING EQUIPMENT.



**01** STANDARD LIFTING HOIST

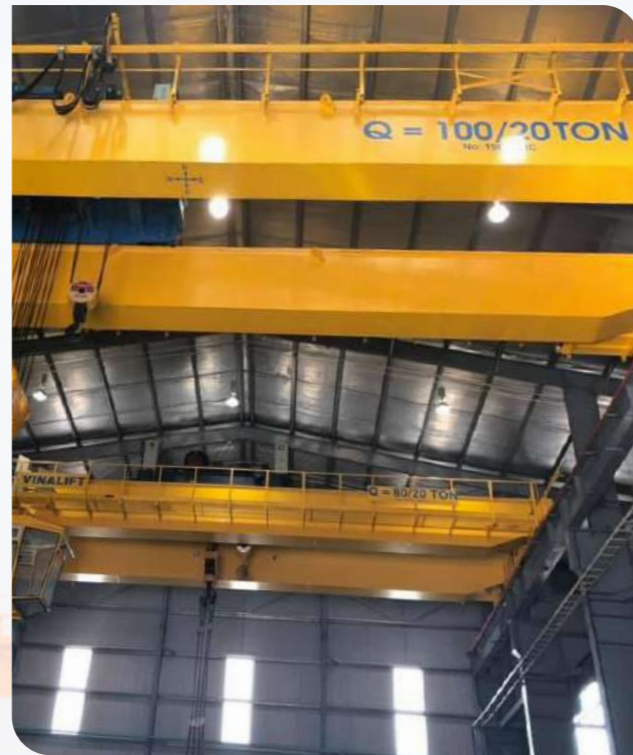


**02** PORTAL CRANE

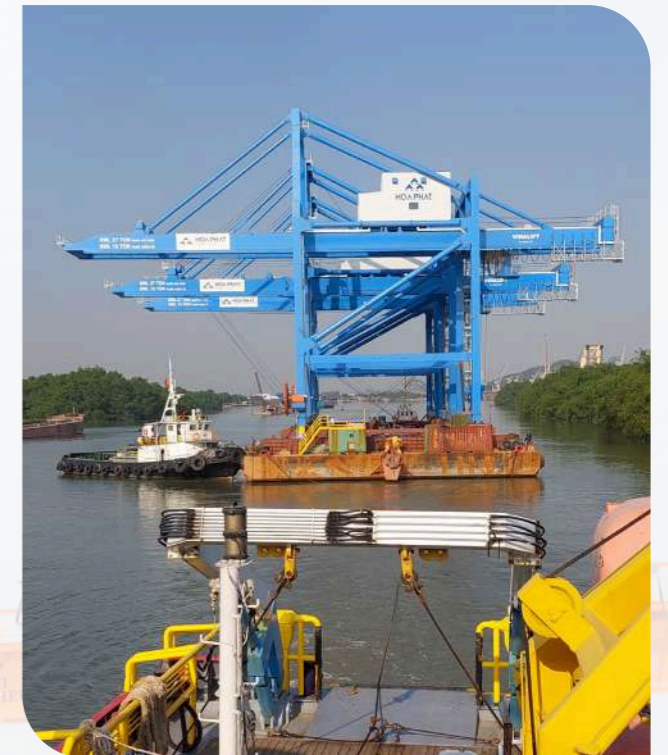
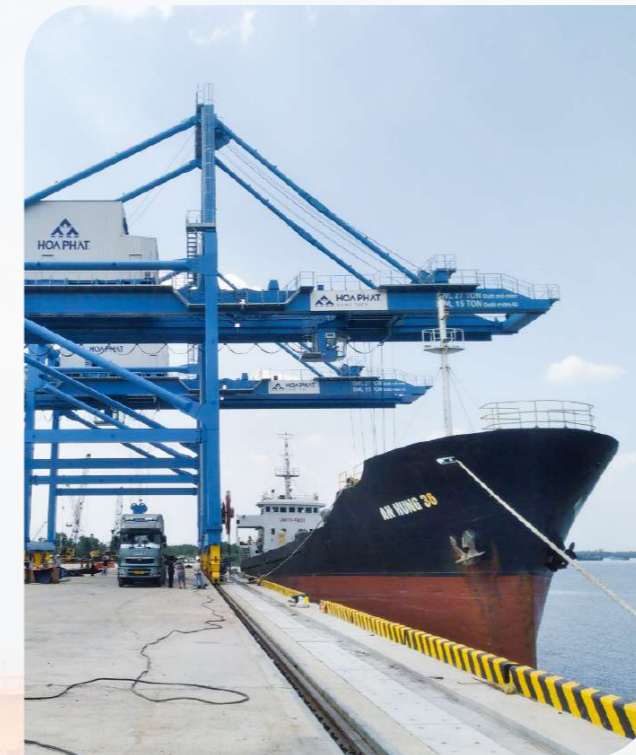




**03** OVERHEAD CRANE



**05** STS, QC CRANE



**04** GANTRY CRANE AND SEMI GANTRY CRANE

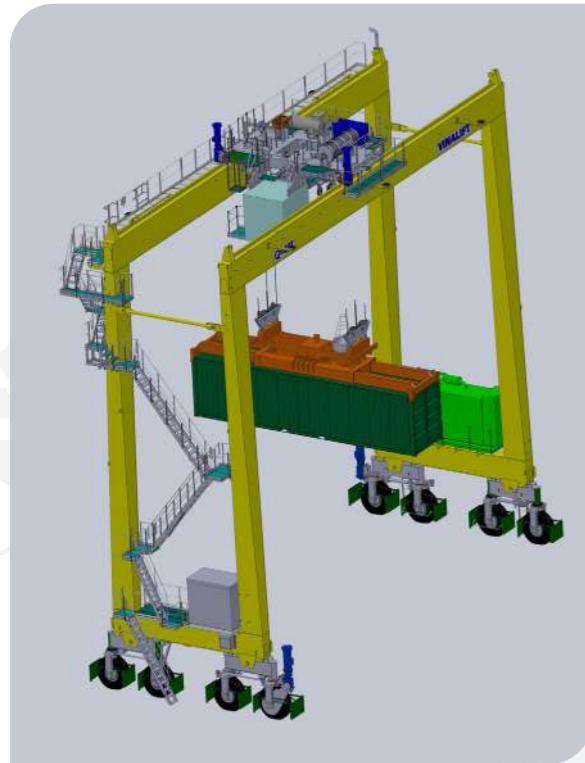


**06** LEVEL LUFFTING CRANE : LLC

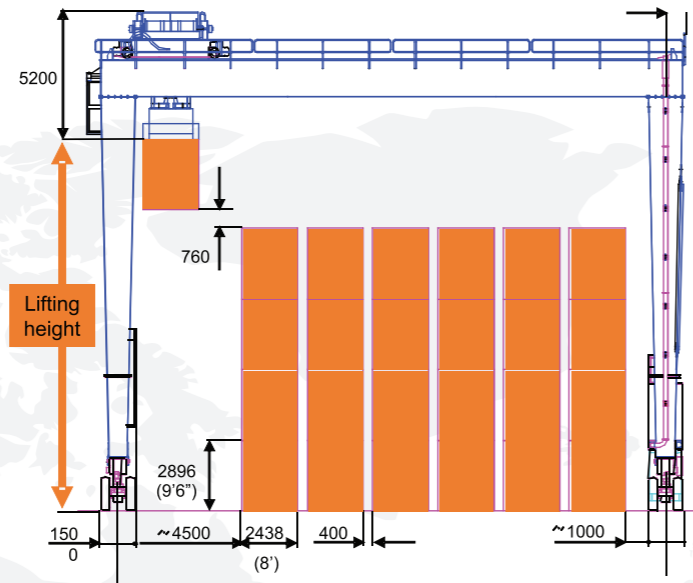




07 RUBBER TYRED GANTRY CRANE



Dimensions



Width	Span	Height	Lifting height
5+lane	20 800	1 over 3	12 340
6+lane	23 600	1 over 4	15 240
7+lane	26 400	1 over 5	18 100
8+lane	29 200	1 over 6	21 000

01 NHA TRANG CITY – MIDDLE OF VIETNAM



PORT HANDLING CRANE | X52

- Lifting capacity: 30 Ton
- Out reach: 12m -25m
- Rotate 360 degree



08 VINALIFT OPEN WINCH





**02 HAI PHONG | FLAT PORT**



**03 CAMBODIA PHNOM PENH PORT**



**04 HUE | CHAN MAY PORT**



**05 HOA PHAT, NHON TRACH PORT**





**06** THAI BINH 2 TPP



**07** CA MAU PROVINCE – SOUTH OF VIETNAM



MATERIAL HANDLING FOR GAS-POWER-FERTILIZER COMPLEX PORTAL CRANE

- Gantry crane – Double girder: 5T
- Cantilever: (4+7+15)M
- Lifting height: Above the rail: 6.5m, Under the rail: 5m.

**08** BA RIA - VUNG TAU PROVINCE – SOUTH OF VIETNAM

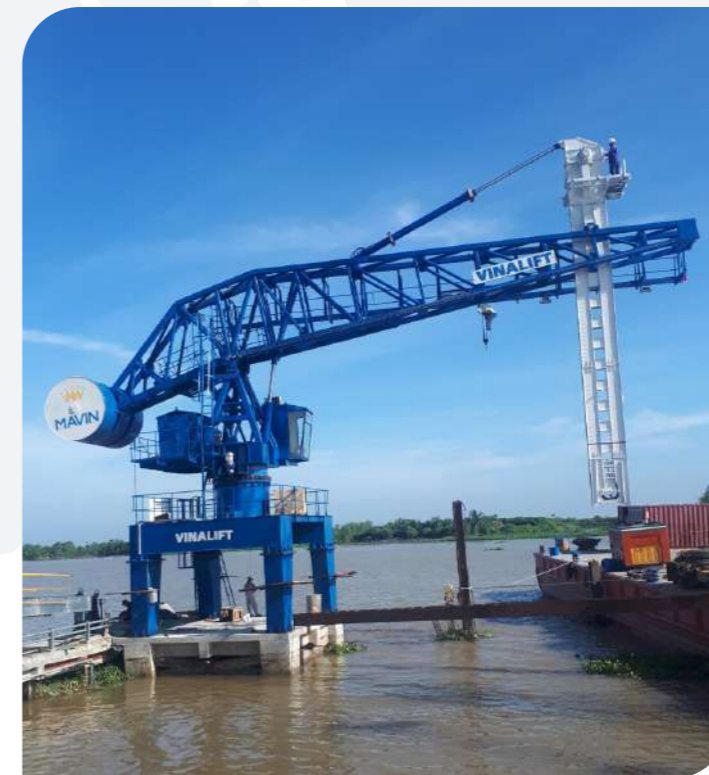


PORT HANDLING | HYDRAULIC PORTAL CRANE

- Lifting capacity: 25 ton
- Out reach: 4-36m
- Lifting height: 32m



**09** DONG THAP PROVINCE – SOUTH OF VIETNAM



MATERIAL HANDLING FOR FEED INGREDIENT FACTORY

- Working capacity: 300T per hour
- Out reach: 14m
- Horizontal rotation: 90 degree
- Vertical rotation: 30 degree





## PORT HANDLING CRANE

10 THANH HOA PROVINCE – NORTH OF VIETNAM | DAI DUONG PORT



### MATERIAL HANDLING FOR MINERAL PRODUCTS | PORTAL CRANE

- Lifting capacity: 40T
- Out reach: 3.5m to 29.5m
- Rotation speed: 0~0,8 rpm



## PORT HANDLING CRANE

11 NGHE AN | NGHI THIET PORT | VISSAI



### MATERIAL HANDLING CRANE

- Lifting capacity: 30
- TonArm reach: 30m
- Rail span: 10.5m
- Capacity handling: 650 ton/h





**01** HO CHI MINH CITY – SOUTH OF VIETNAM | METRO LINE 01



**METRO LINE CONSTRUCTION  
GANTRY CRANE**

- Lifting capacity: 50T
- Span: 31.5m
- Lifting height: 12m

**02** HAI PHONG CITY – NORTH OF VIETNAM



**BRIDGE CONSTRUCTION |  
GANTRY CRANE**

- Lifting capacity: 90T
- Span: 36m
- Lifting height: 18m

**03** DUBAI, UAE



**METROLINE CONSTRUCTION**

- Lifting capacity: 126T
- Span: 33m
- Lifting height: 14.5m





**04** THE U.S.A – NORTH CAROLINE



BRIDGE BUILDING | GANTRY CRANE

- Lifting capacity: 63T
- Span: 18.5m
- Lifting height: 17.3



**05** BANGKOK - THAILAND



PRE-CASTING YARD | BANGKOK | THAI LAN

- Gantry crane 150 ton
- Span 40m - 2 set
- Gantry crane 25 ton
- Span 33m - 4 set



**06** SMCC - PHILIPINE



PRE-CASTING YARD | PHILIPINE

- Gantry crane 90 ton
- Span 36m - 2 set





**07** SMCC - BANGLADESH



**STEEL PIPE YARD | BANGLADESH**

- Gantry crane 35 ton,
- Span 33m - 2 set



**08** RUBICA - CANADA



**BRIDGE ERECTION | VANCOUVER | CANADA**

- Crane (30+30) ton
- Lifting height 65m



**09** FECON | HANOI | METRO LINE



**METRO CONSTRUCTION | HA NOI**

- Gantry crane (45+45) ton
- Lifting height 26m



**10** MEXICO



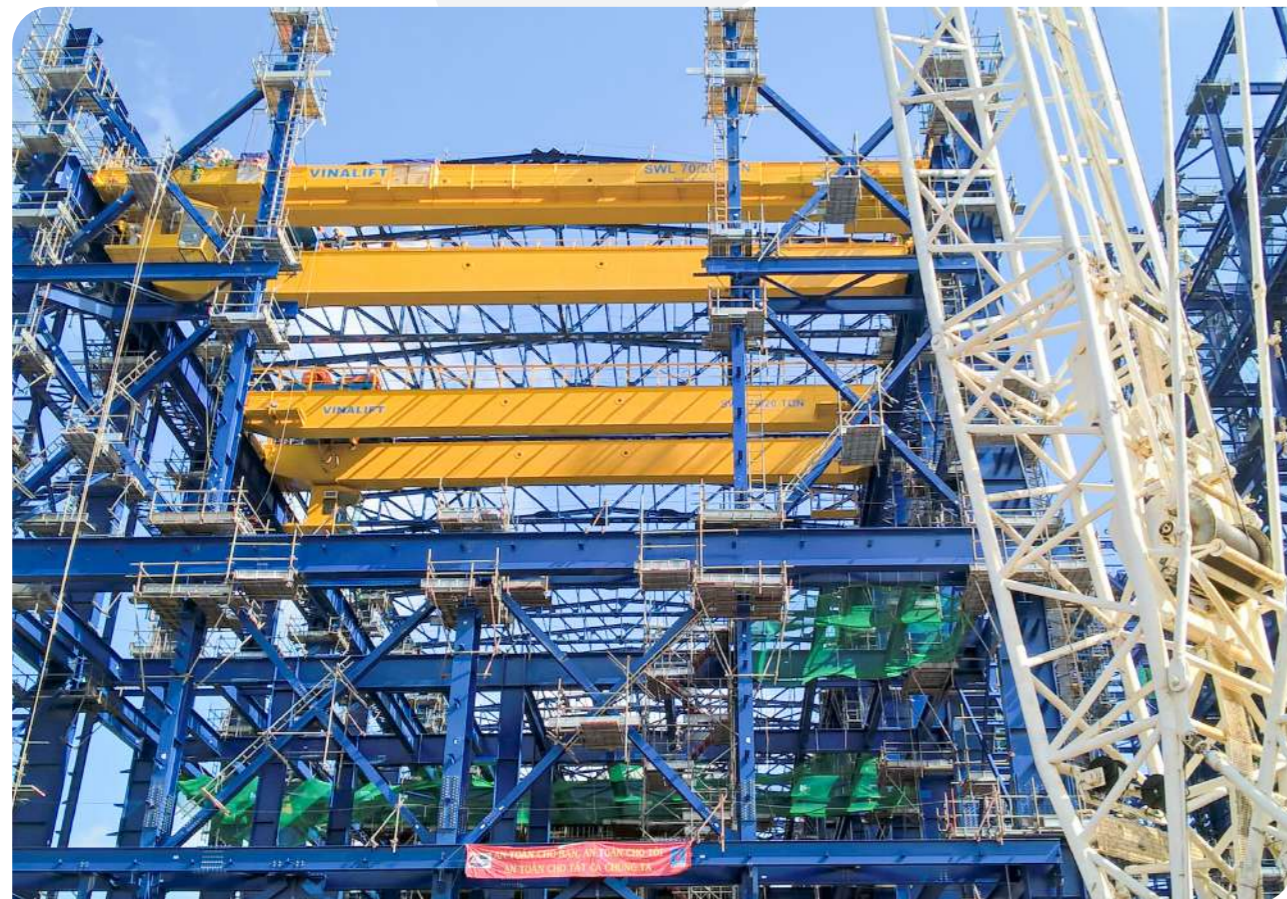


**01** SOC TRANG PROVINCE – SOUTH OF VIETNAM | LONG PHU 1 TPP



**THERMAL POWER PLANT  
TURBINE HALL | OVERHEAD CRANE**

- Lifting capacity: 70/20T
- Span: 30.5m
- Lifting height: 35m.



**02** LAOS PDR



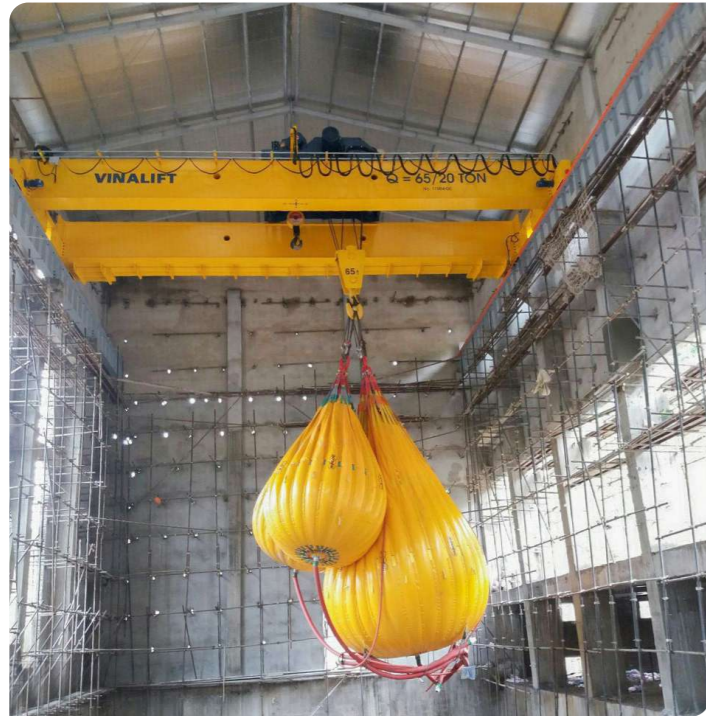
**HYDRO POWER PLANT | GANTRY CRANE**

- Lifting capacity: 25T
- Span: 9m
- Lifting height: 50m





**03** LAO CAI PROVINCE – NORTH OF VIETNAM



**HYDRO POWER PLANT (NAM XAY)  
PORTAL CRANE**

- Lifting capacity: 65/20T
- Span: 14.35m
- Lifting height: 12m



**04** HA GIANG PROVINCE – NORTH OF VIETNAM



**VINH HA HYDROPOWER PLANT**

- LIFTING CAPACITY: 2X100T/ 2X32T
- SPAN: 8.5M
- LIFTING HEIGHT: 40M
- WORKING DUTY: 1AM





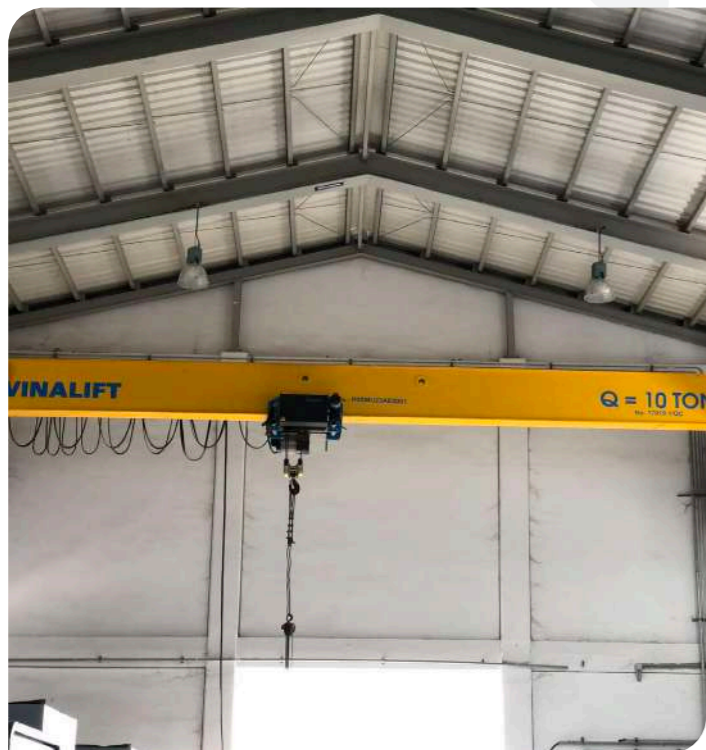
**05** LAO CAI PROVINCE – NORTH OF VIETNAM



**BAC ME HYDROPOWER - GANTRY CRANE**

- Gate handling Gantry Crane: 2x50 ton - 1 set
- Gate handling winch: 2x125 ton - 5 set

**06** SONG HAU 1 TPP



**07** THAI BINH 1 TPP



**08** KCP - PHU YEN 1 THERMAL



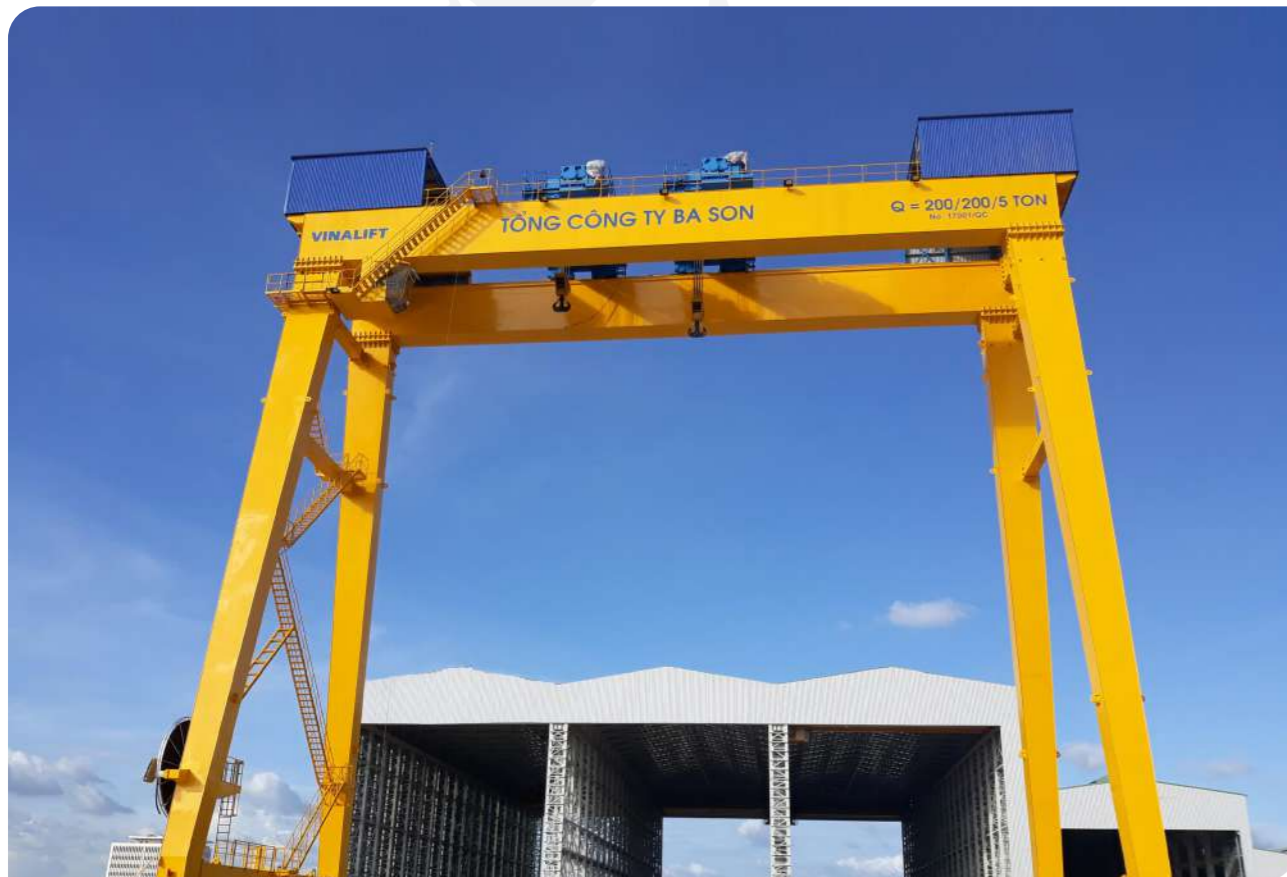


**01** BASON SHIP BUILDING FACTORY – SOUTH OF VIETNAM



SHIPBUILDING FACTORY | GANTRY CRANE

- Lifting capacity: 200/200T
- Span: 36m
- Lifting height: 33m



**02** PHA RUNG SHIPBUILDING - NORTH OF VIET NAM



**03** SONG THU SHIPBUILDING - MIDLE OF VIET NAM





**04** 189 SHIPBUILDING NORTH OF VIET NAM



**05** HOANG GIA SHIPBUILDING NORTH OF VIET NAM



**01** HOA PHAT HUNG YEN STEEL PLANT PROJECT



**02** VINA KYOEI STEEL MILL





**01 DONG TAM FACTORY – SOUTH OF VIETNAM**



PRODUCTION LINE | OVERHEAD CRANE

- Lifting capacity: (12+12)T
- Span: 29m
- Lifting height: 5.3m

**02 HANWHA FACTORY – NORTH OF VIETNAM**



AERO ENGINE FACTORY | OVERHEAD CRANE

- Lifting capacity: 2T
- Lifting height: 8m

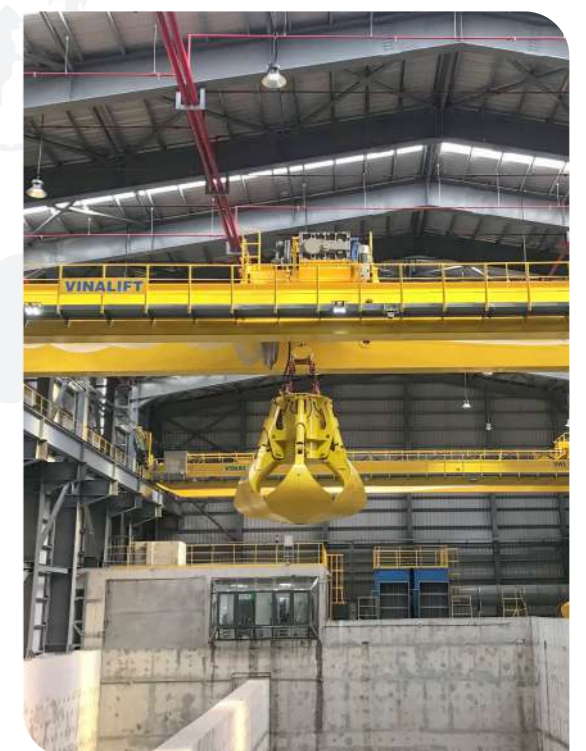
**03 SAMSUNG ELECTRONICS FACTORY – NORTH OF VIETNAM**



CLEANING ROOM CRANES | JIB CRANE

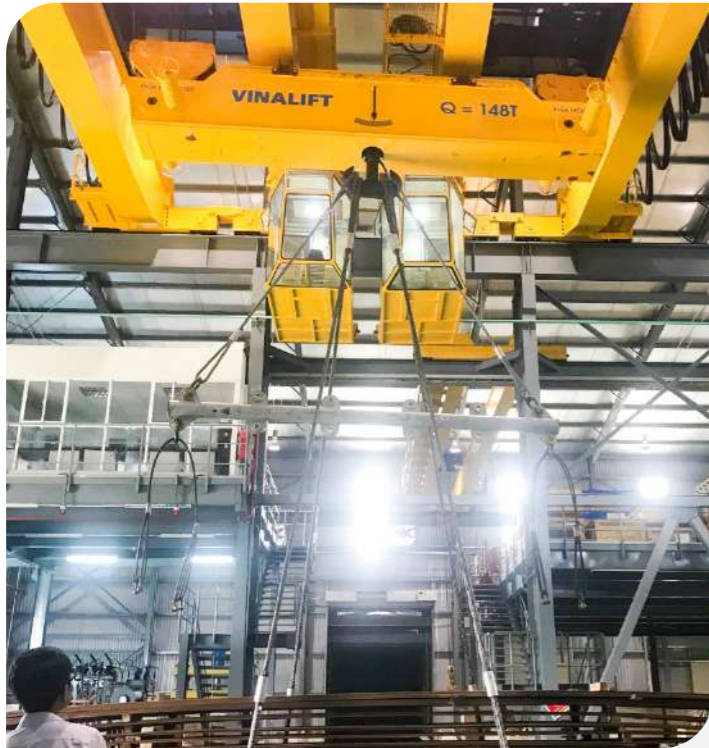
- Lifting capacity: 5T
- Cleaning classification: 1000

**04 AUTO OPERATION CRANE FOR WASTE TO ENERGY**





**05** DONG ANH ELECTRICAL EQUIPMENT PROJECT



**01** ACCESSORIES FOR RTG QC AND SHIP ENGINE







**VINALIFT**  
Lifting your dream

- |                  |               |                    |                 |
|------------------|---------------|--------------------|-----------------|
| LAOS (1)         | OMAN (7)      | CAMBODIA (13)      | THAI LAN (19)   |
| BANGLADESH (2)   | KUWAIT (8)    | EU (14)            | BANGLADESH (20) |
| SAUDI ARABIA (3) | ARGENTINA (9) | KOREA (15)         | CANADA (21)     |
| UAE(4)           | ITALYA(10)    | MYANMAR (16)       |                 |
| THE US (5)       | JAPAN (11)    | RUSSIA (17)        |                 |
| LIBYA (6)        | MEXICO (12)   | THE PHILIPINS (18) |                 |





CERTIFICATION FROM SMCC



CERTIFICATION FROM SONG THU SHIPYARD



CERTIFICATION FROM SMCC



Inspection Certificate For Details Of Conformity



CE Certification



ISO Certification

